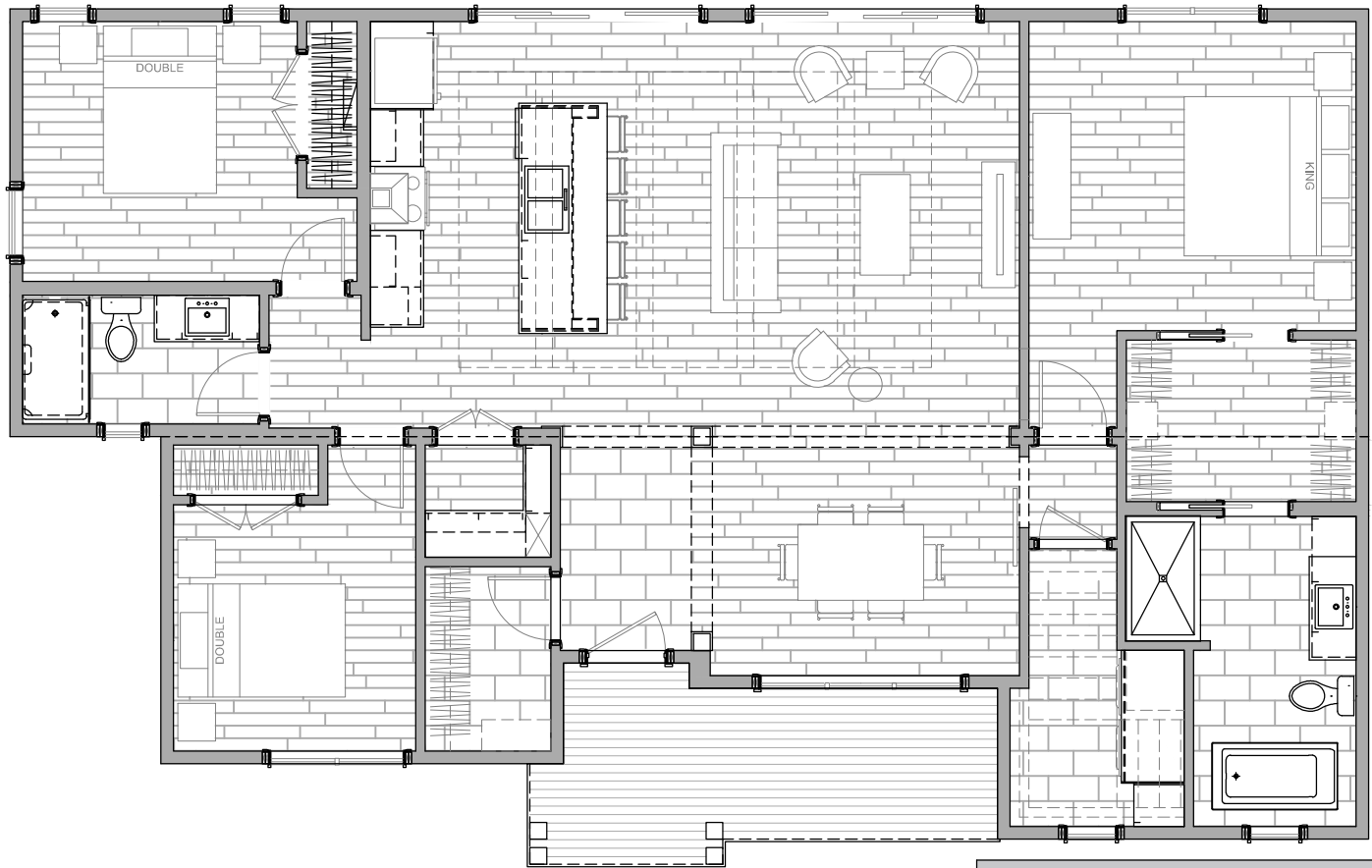




**PORTO CR - 3 BED - 2 BATH - #280220**

- 34'-0" X 54'-0" OVERALL, 1530 S.F. LIVING AREA
- LARGE FOYER WITH WALK-IN CLOSET
- WALK-IN PANTRY
- WALK-IN CLOSET AND ENSUITE BATH
- OPEN CONCEPT WITH LARGE KITCHEN

◀ 54'-0" ▶



▶ 34'-0" ▼

**CRAFTSMAN**

☎ 1.800.561.8066

WWW.SUPREMEHOMES.CA

PLANS AND IMAGES ARE EXAMPLES, THE FINAL PRODUCT MAY VARY  
 © COPYRIGHT 2015 SUPREME HOMES, ALL RIGHTS RESERVED