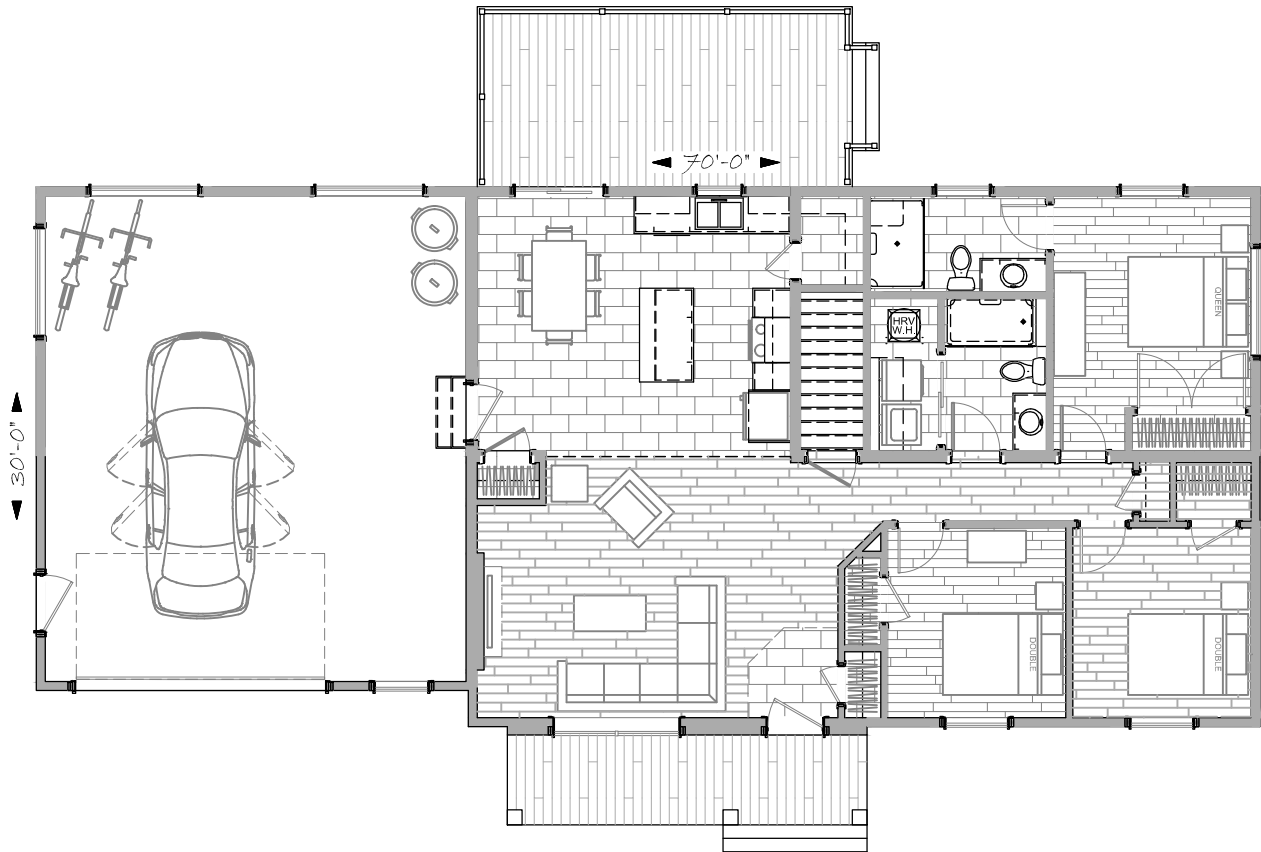




BUILDERS' CHOICE TR-10 - 3 BED - 2 BATH - #200218

- 30' X 70' OVERALL, 1320 S.F. LIVING AREA
- ONE CAR GARAGE, 26'-6" X 27' OVERALL, 702 S.F.
- LOW COST MODEL
- DESIGNED FOR QUICK MOVE-IN



TRADITIONAL

1.800.561.8066

WWW.SUPREMEHOMES.CA