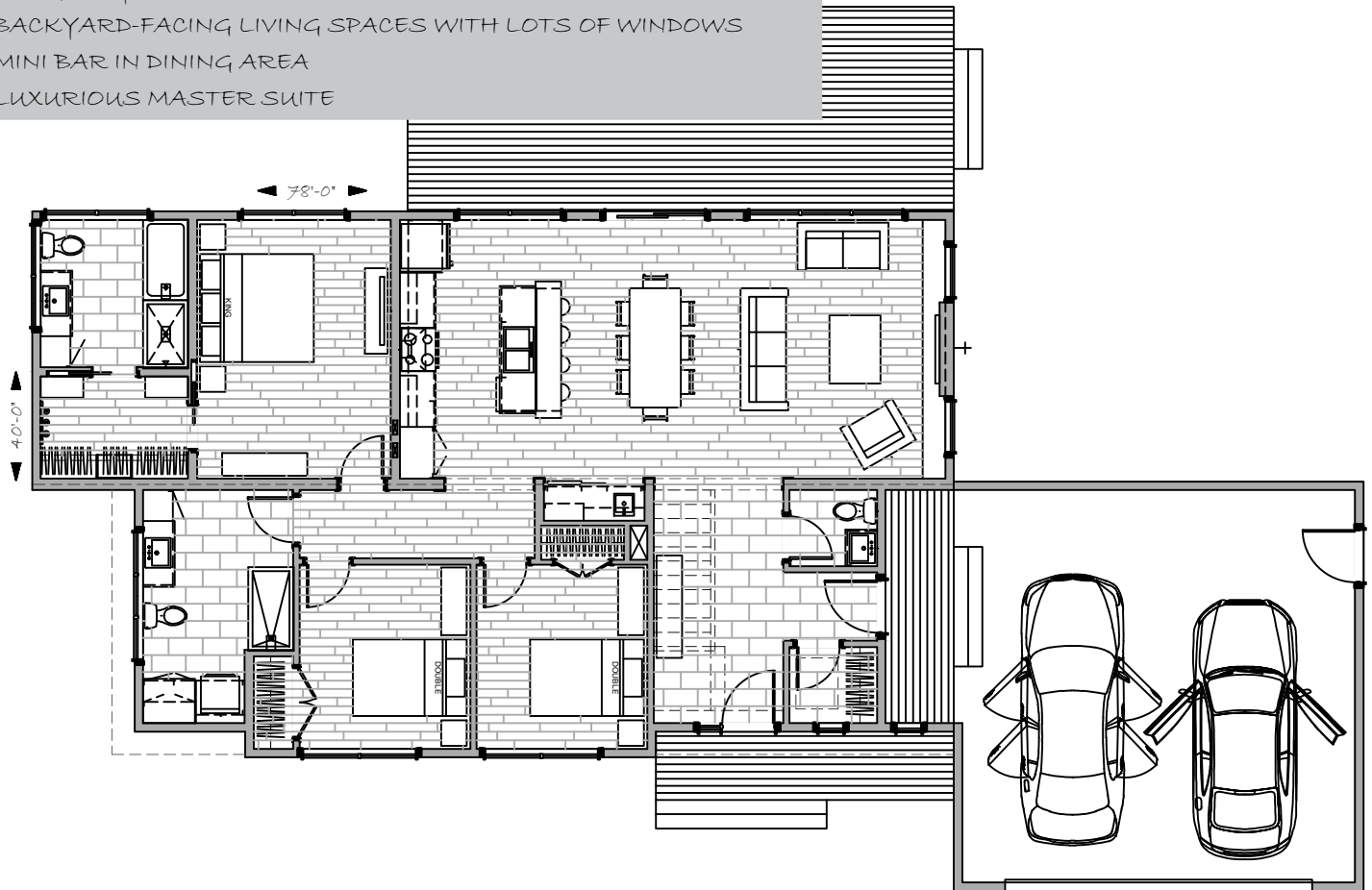




MEZZA CT-G - 3 BED - 2 1/2 BATH - #080317

- 54' x 32' OVERALL, 1540 S.F. LIVING AREA
- DOUBLE GARAGE, 24' x 24' OVERALL, 576 S.F.
- LARGE FOYER WITH WALK-IN CLOSET AND POWDER ROOM
- BACKYARD-FACING LIVING SPACES WITH LOTS OF WINDOWS
- MINI BAR IN DINING AREA
- LUXURIOUS MASTER SUITE



CONTEMPORARY

1.800.561.8066

WWW.SUPREMEHOMES.CA