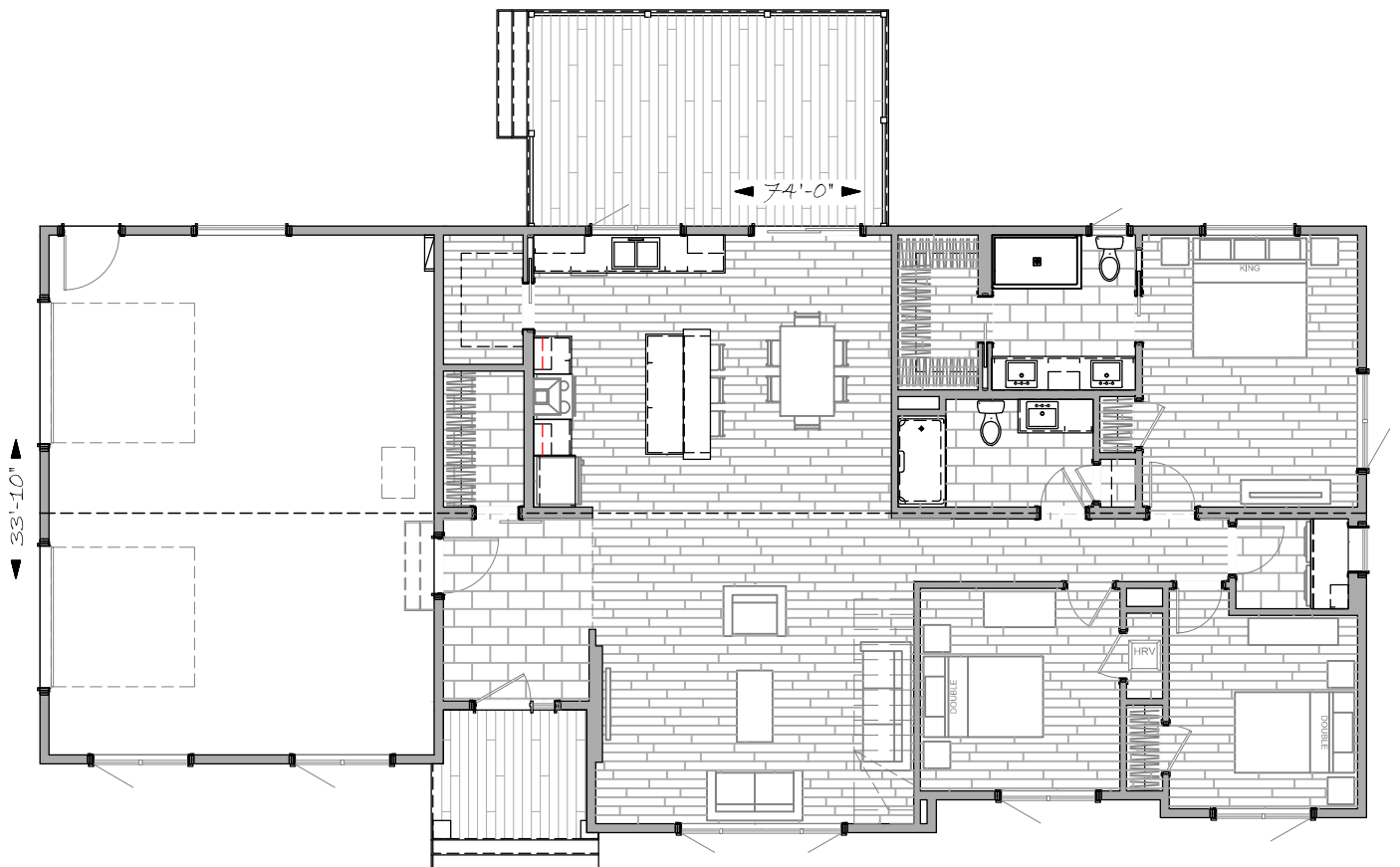


SAUVIGNON CT-3 - 3 BED - 2 BATH - #260218

- 33'-10" X 74' OVERALL, 1669 S.F. LIVING AREA
- TWO CARS GARAGE, 22' X 30' OVERALL, 660 S.F.
- WALK-IN PANTRY
- TWO WALK-IN CLOSETS AND ENSUITE BATH
- OPEN CONCEPT WITH LARGE KITCHEN



CONTEMPORARY

1.800.561.8066

WWW.SUPREMEHOMES.CA

PLANS AND IMAGES ARE EXAMPLES, THE FINAL PRODUCT MAY VARY

© COPYRIGHT 2015 SUPREME HOMES, ALL RIGHTS RESERVED