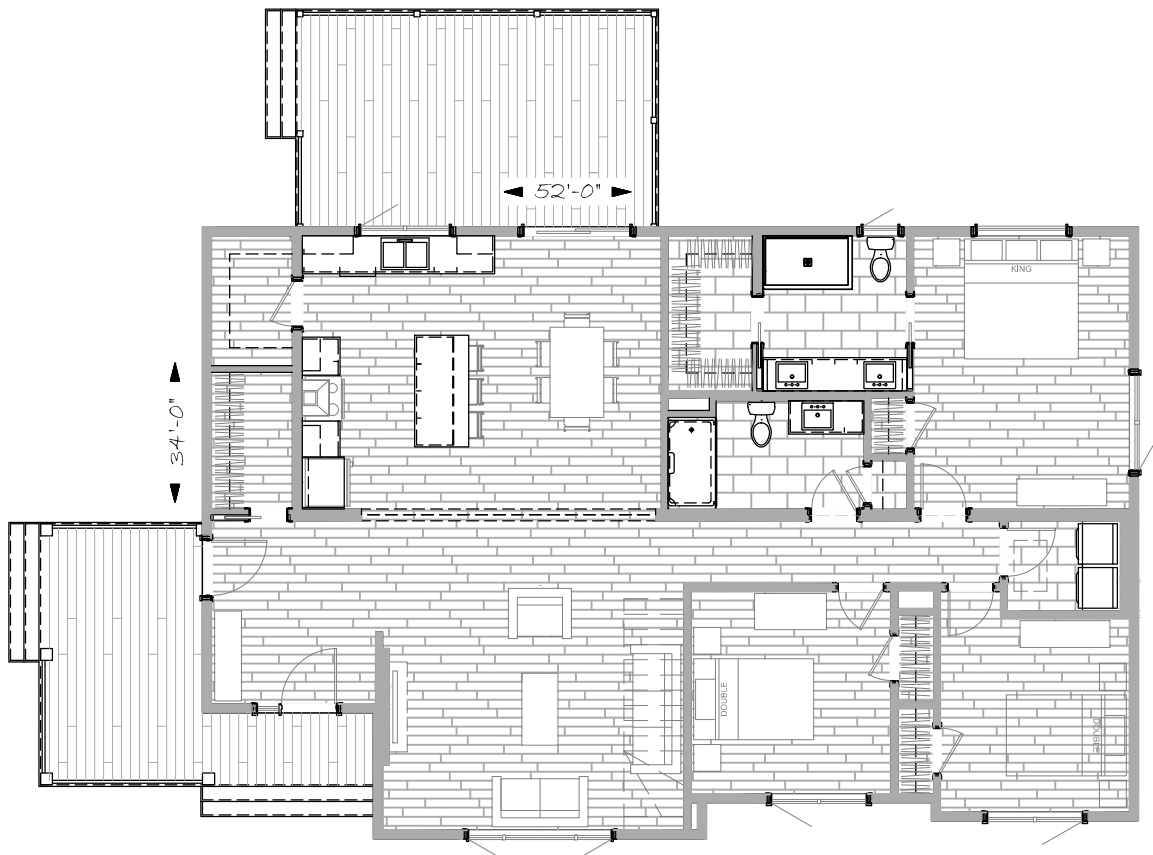




SAUVIGNON CT-2 - 3 BED - 2 BATH - #130318

- 34'-0" X 74' OVERALL, 1672 S.F. LIVING AREA
- WALK-IN PANTRY
- TWO WALK-IN CLOSETS AND ENSUITE BATH
- OPEN CONCEPT WITH LARGE KITCHEN



CONTEMPORARY

1.800.561.8066

WWW.SUPREMEHOMES.CA

PLANS AND IMAGES ARE EXAMPLES, THE FINAL PRODUCT MAY VARY
 © COPYRIGHT 2015 SUPREME HOMES, ALL RIGHTS RESERVED