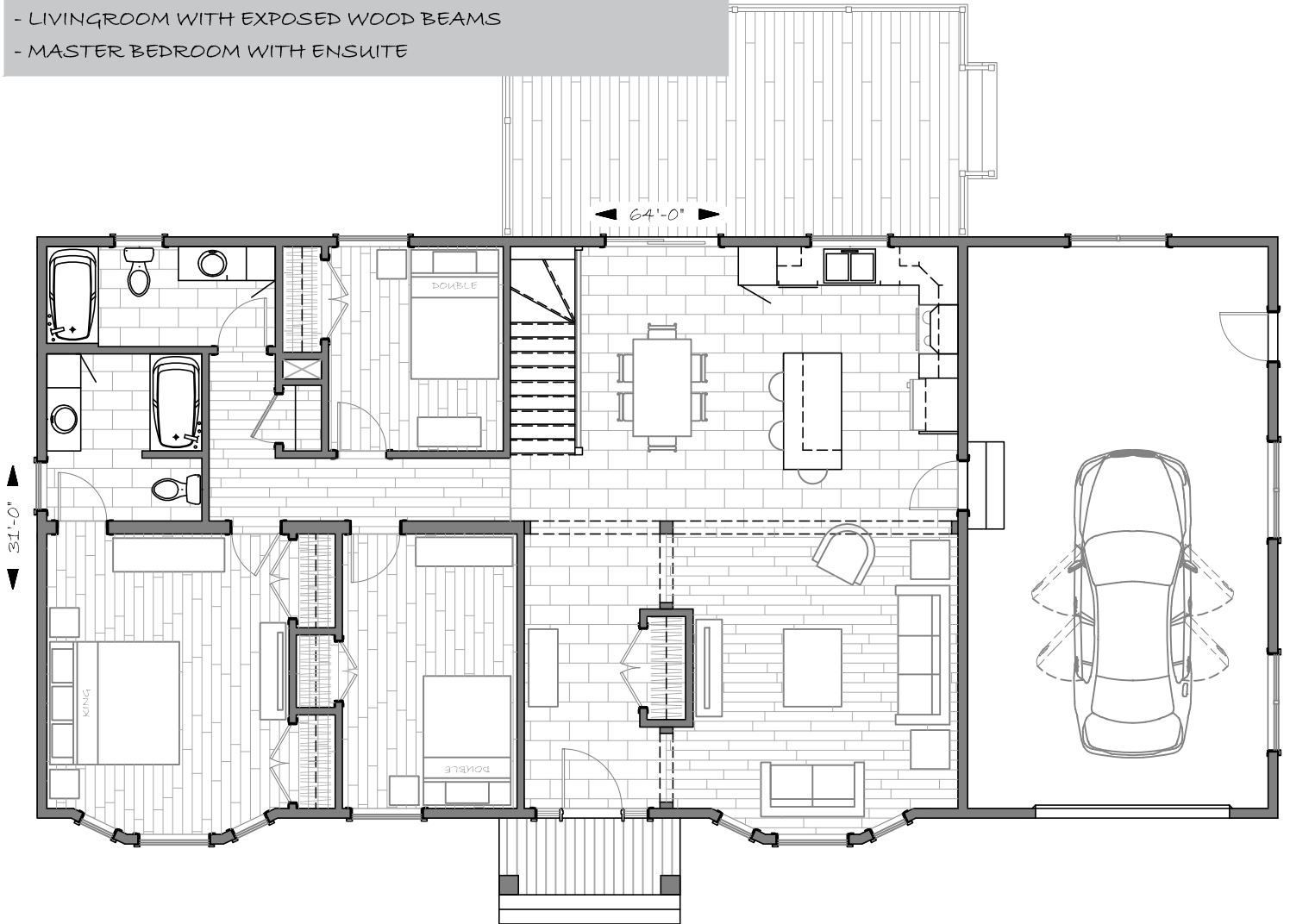




AMESBURY CVG - 3 BED - 2 BATH - #190216

- 64' X 31' OVERALL, 1460 S.F. LIVING AREA
- ONE CAR GARAGE, 16' X 30' OVERALL, 480 S.F.
- LIVINGROOM WITH EXPOSED WOOD BEAMS
- MASTER BEDROOM WITH ENSUITE



CONVENTIONAL

1.800.561.8066

WWW.SUPREMEHOMES.CA

PLANS AND IMAGES ARE EXAMPLES, THE FINAL PRODUCT MAY VARY

© COPYRIGHT 2015 SUPREME HOMES, ALL RIGHTS RESERVED